

ORANGE



Manufactured By :



A Bio Mission Company

SRT AGRO SCIENCE PVT. LTD

Village : Funda, Teh- Patan, Dist. - Durg, C.G. 491111

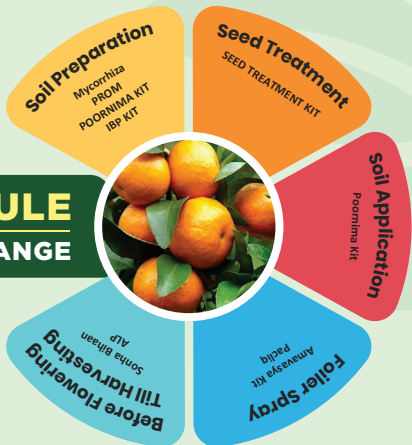
Marketing & Promotion By :



www.siestogreen.com

Address : Bhimsaria Industrial Park, Umiya Market Ring Road No. 2,
Near HP Gas Godown, Bhanpuri, Raipur, C.G. (493221)
Customer Care No. : +91-88174-00702 Email : siesto.green@gmail.com

CROP SCHEDULE FOR 1 HECTARE ORANGE



Period	Product	Siesto products Quantity	Purpose / Act As	Management
Soil Preparation OR TRANSPLANTING (SOIL APPLICATION)	MycoMarshal (Mycorrhiza) Granule	7.5KG	Root Health Booster	Nutrient Management
	PROM (OPTIONAL)	750KG	ALTERNATE FOR DAP	Nutrient Management
	POORNIMA KIT	1 KIT	Reduces usage urea & DAP by 50 %, Increase Phosphorous.	Nutrient Management
	IBP	1 KIT	Protection against all Soil Borne Diseases	Disease Management For eg. (Leaf spot / Thrips)
Seed Treatment (SEED TREATMENT)	SEED TREATMENT KIT	1 KIT	Enhances Seed Germination & Protection from Infectious diseases.	Disease Management For eg. (Damping off / Thrips)
EVERY MONTH 3 DAY BEFORE POORNIMA (SOIL APPLICATION)	POORNIMA KIT	1 KIT	Develops & Improvise crop density	Nutrient Management
EVERY MONTH 3 DAYS BEFORE Dark Moon (Amavasya) (FOILER SPRAY)	AMAVASYA KIT	1 KIT	Protection from fungal and bacterial diseases.	Disease Management / Pest Management
	Pacliq (OPTIONAL)	1 PACKET	Protect from Nematodes	Nematode Control For eg. (Root knot nematode)
Before flowering EVERY 15 DAYS TILL HARVESTING (FOILER SPRAY)	SonhaBihaan	750 gm/1500 gm	Enhances crop yield	Regulator for Nutrient Management
	ALP	750 gm/1500 gm		Micronutrient Management



Soil Type

Medium or light loamy soil



Soil pH

6.0-8.0



Climate / Temperature

Temperature between
10°C - 35°C is ideal



Season of Planting

Propagated by seeds or by T-Budding
during the months of July-August
after the beginning of monsoon



Spacing

As per variety



Manuring & Fertilization

Depends upon the fertility of
soil & on the quality



Water Management

In an interval of 10-15 days
during winters & in interval of
5-7 days in summers



Harvesting Duration

Matures in February-March



Yield

Commences from 5th year with
40-50 fruits/tree & post
stabilisation (8yrs) average of
500-600 fruits/tree

GENERAL ISSUES, PEST ATTACK & DISEASE MANAGEMENT DURING FARMING



Pest Attack or Disease

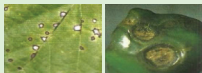
Nematode Control

Solution

An Eco-Friendly
Bionematicide

Suggested Product

Pacliq



Fungal Disease
Management

A Biological fungicide that
control pathogens

Indofa



Bacterial Disease
Management

An Ecofriendly Biological
Bactericide Cum Biofungicide

Bacillus

Disease
Management
&
Pest Attack

Helps to Control & Prevent
Plant Diseases & Pest Attack

Amavasya
Kit



CONVENTIONAL FARMING

v/s

BIO CAPSULE FARMING

Parameters	Conventional	BIO
Yield	On Average, the yield is 1.1-1.5 tonnes/acre.	Average crop yield per acre in india is 1.5-2 tonnes
Cost	High	Low
Soil pH	Neutral	Neutral
Sale Price	Medium	High
Quality	Low	High
Export	Residue difficulties	No residue content

NUTRITION CONTENT

Parameters	Conventional Farming Unit (mg/100g ⁻¹)	Organic Farming Unit (mg/100g ⁻¹)
Mineral	Average	High
Iron	Low	High
Fat	Neutral	Neutral
Magnesium	Medium	High
Calcium	Low	High
Phosphorus	Residue difficulties	No residue content
Potash	Low	High
Toxicity	High	Low

Note: Data mention is subject to change with respect to soil type, seed, weather condition, environment etc.